

# Biotinylated Cynomolgus MSLN/Mesothelin Protein (Primary Amine Labeling)



Cat. No. MSL-CM180B

## Description

<b>Source</b>	Recombinant Biotinylated Cynomolgus MSLN/Mesothelin Protein (Primary Amine Labeling) is expressed from HEK293 with His tag at the C-Terminus. It contains Asp406-Gly690.
<b>Accession</b>	XP_005590874.2
<b>Molecular Weight</b>	The protein has a predicted MW of 33 kDa. Due to glycosylation, the protein migrates to 35-50 kDa based on Tris-Bis PAGE result.
<b>Endotoxin</b>	Less than 1EU per µg by the LAL method.
<b>Purity</b>	> 95% as determined by Tris-Bis PAGE > 95% as determined by HPLC

## Formulation and Storage

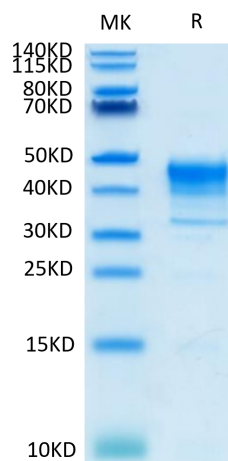
<b>Formulation</b>	Lyophilized from 0.22µm filtered solution in PBS (pH 7.4). Normally 8% trehalose is added as protectant before lyophilization.
<b>Reconstitution</b>	Centrifuge the tube before opening. Reconstituting to a concentration more than 100 µg/ml is recommended. Dissolve the lyophilized protein in distilled water.
<b>Storage</b>	-20 to -80°C for 12 months as supplied from date of receipt. -80°C for 3-6 months after reconstitution. 2-8°C for 2-7 days after reconstitution. Recommend to aliquot the protein into smaller quantities for optimal storage. Please minimize freeze-thaw cycles.

## Background

Mesothelin, also known as MSLN, is a protein that in humans is encoded by the MSLN gene. Cloning studies showed that the mesothelin gene encodes a precursor protein that is processed to yield mesothelin which is attached to the cell membrane by a glycoposphatidylinositol linkage and a 31-kDa shed fragment named megakaryocyte-potentiating factor (MPF). Although it has been proposed that mesothelin may be involved in cell adhesion, its biological function is not known. A knockout mouse line that lacks mesothelin reproduces and develops normally.

## Assay Data

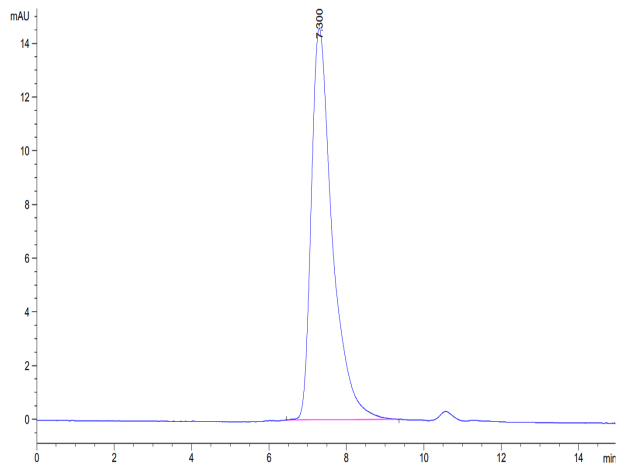
### Tris-Bis PAGE



Biotinylated Cynomolgus MSLN on Tris-Bis PAGE under reduced condition. The purity is greater than 95%.

### SEC-HPLC

Assay Data



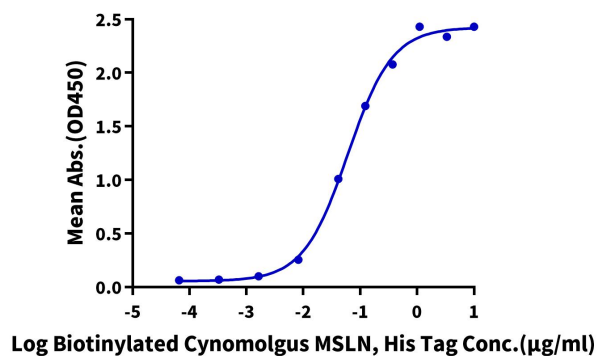
The purity of Biotinylated Cynomolgus MSLN is greater than 95% as determined by SEC-HPLC.

Assay Data

ELISA Data

**Biotinylated Cynomolgus MSLN, His Tag ELISA**

0.1µg Anti-MSLN Antibody, hFc Tag Per Well



Immobilized Anti-MSLN Antibody, hFc Tag at 1µg/ml (100µl/Well) on the plate. Dose response curve for Biotinylated Cynomolgus MSLN, His Tag with the EC50 of 60.7ng/ml determined by ELISA.